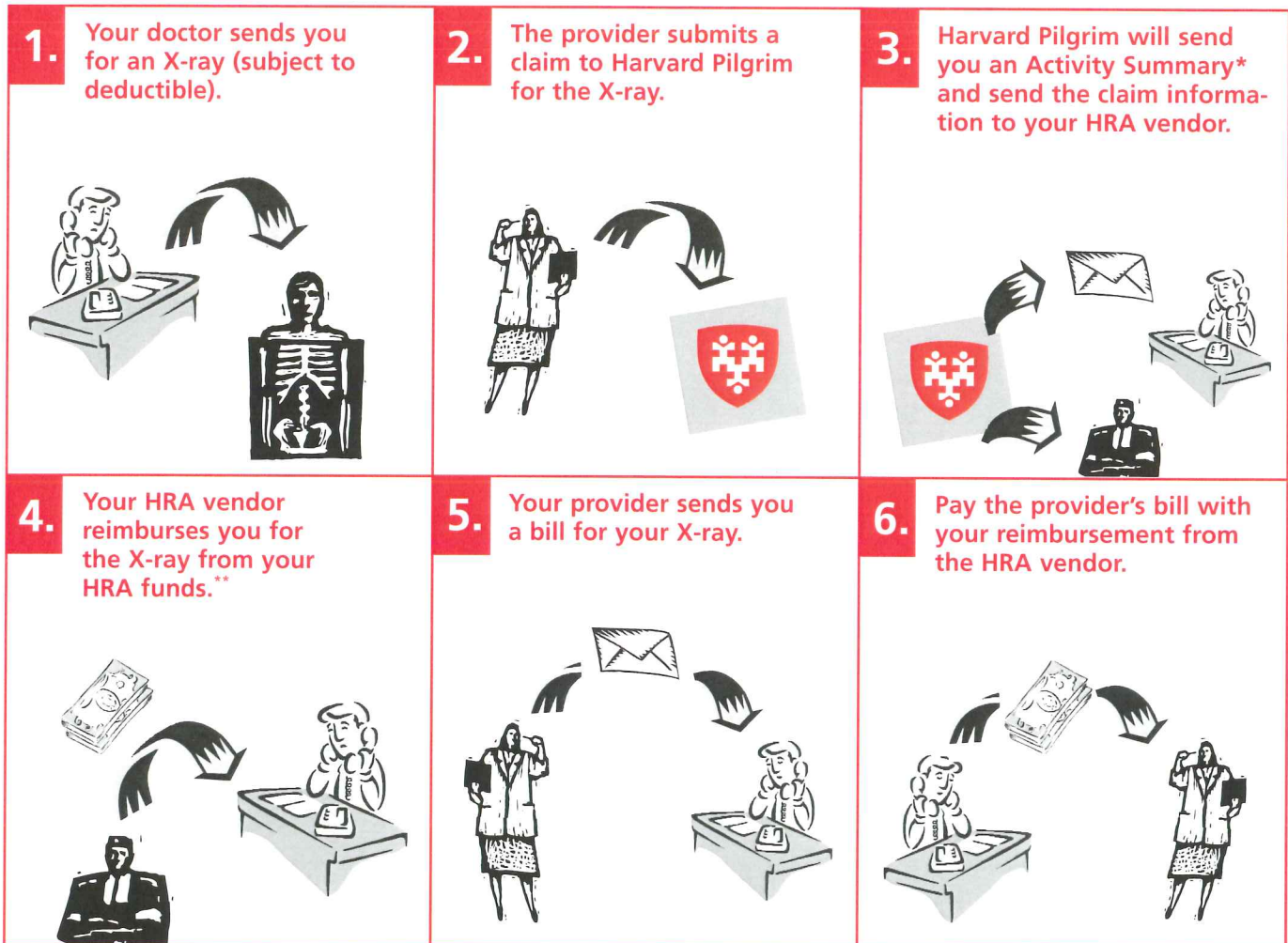


## HOW IT WORKS:

# Your Health Reimbursement Account

Your Harvard Pilgrim Health Reimbursement Account (HRA) through Milford Regional Medical Center is funded by your employer to help pay out-of-pocket costs related to your coverage.

Your HRA vendor reimburses you directly. Here's how it works:



### Questions?

**Remember:** HRA-reimbursed expenses cannot be reimbursed by any other program, such as a flexible savings account (FSA). For information about your coverage, contact your employer or Harvard Pilgrim.

\* Save Activity Summaries to compare with bills you receive from providers.

\*\* Up to the balance available in your HRA.



Harvard Pilgrim Health Care includes Harvard Pilgrim Health Care and its affiliates, Harvard Pilgrim Health Care of New England and HPHC Insurance Company.