



Workflow for:  Family Medicine  Internal Medicine  Pediatrics  Specialty  
 Clerical  Clinical  Provider

Date Updated: 12/07

Pages: 2

Approved by: On File

**Centricity: Protocols**

Protocols are reminders for when a patient is due for a specific test or service. These are based on patient population and are not patient specific.

Protocols can be based on Age, Gender, Diagnosis, Medication, etc.

While in a patient's chart click the Protocols button

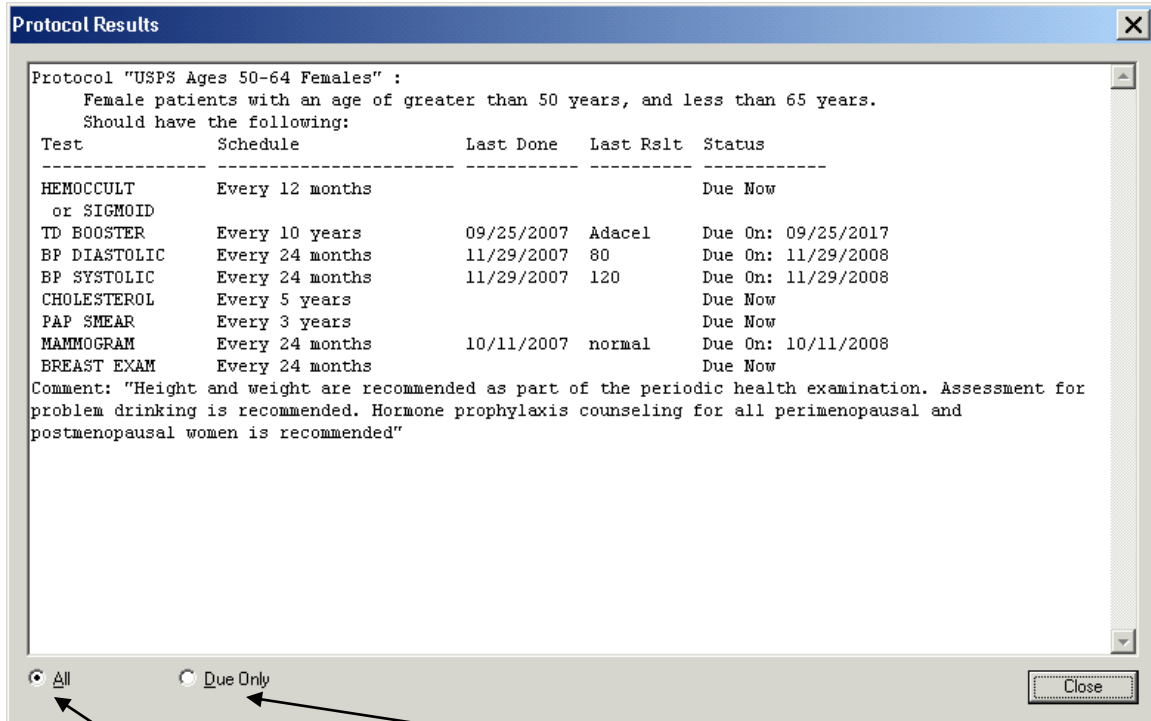
The screenshot shows the Centricity EMR interface for a patient named Angela Johnson. The 'Protocols' button is highlighted with a red arrow. The interface includes a menu bar, a toolbar, and several data panels:

- Patient Test:** 52 Years Old Female (DOB: 01/01/1955)
- Problems:** DIZZINESS, ATRIAL FIBRILLATION, ANEMIA IRON DEFICIENCY, TROCHANTERIC BURSTITIS, SPRAIN/STRAIN NOS, HEADACHE, HYPERTENSION, VACCINE AGAINST INFLUENZA, LEG PAIN, CHRONIC, MONONUCLEOSIS, HEPATITIS B, HEPATITIS C, HEPATITIS D, HEPATITIS E, HEPATITIS A, HEPATITIS F, HEPATITIS G, HEPATITIS H, HEPATITIS I, HEPATITIS J, HEPATITIS K, HEPATITIS L, HEPATITIS M, HEPATITIS N, HEPATITIS O, HEPATITIS P, HEPATITIS Q, HEPATITIS R, HEPATITIS S, HEPATITIS T, HEPATITIS U, HEPATITIS V, HEPATITIS W, HEPATITIS X, HEPATITIS Y, HEPATITIS Z.
- Medications:** FLEXERIL 10 MG TABS (CYCLOBENZAPRINE HCL), ADVAIR DISKUS 100-50 MCG/DOSE MISC (FLUTICASONE SALT/MOMETASONE FUMARATE), METFORMIN HCL 1000 MG TABS (METFORMIN HCL) 1 tab, METFORMIN HCL 500 MG TABS (METFORMIN HCL) 1 tab, FEXOFENADINE HCL 60 MG TABS (FEXOFENADINE HCL), SPIRIVA HANDIHALER 18 MCG CAPS (TIOTROPIUM BROMIDE), FISH OIL 1000 MG CAPS (OMEGA-3 FATTY ACIDS) 2 caps, FLAX SEED OIL CAPS (FLAXSEED (LINSEED) CAPS) 2 caps, FEXOFENADINE HCL 60 MG TABS (FEXOFENADINE HCL).
- Allergies:** PCN, PENICILLIN
- Directives:** DISCUSSED - NO DECISION MADE
- FlowSheet: Enterprise/CCC/PPREVENTIVE CARE**

	Date	Value
WEIGHT	11/29/2007	175
HEIGHT	11/29/2007	54
BMI	11/29/2007	42.35
BP SYSTOLIC	11/29/2007	120
BP DIASTOLIC	11/29/2007	80
CHOLESTEROL		
TRIGLYCERIDE		
HDL		
LDL		
MAMMOGRAM	10/11/2007	normal
PAP SMEAR		
PSA ULTRASEN		
- Documents: All**

Date	Summary	Status
12/27/2007	Rx Refill: spiriva refill	Signed
12/18/2007	Otc Visit	On Hold
12/14/2007	Append: Lab Results Let	Signed
12/14/2007	Append: referral	Signed
12/11/2007	Rx Refill: METFORMIN HC	Signed
12/11/2007	Rx Refill: ADVAIR DISKU	Signed
12/07/2007	Otc Visit	On Hold
11/30/2007	Phone: referral	Signed
11/29/2007	Letter: Lab Results Lette	Signed
- Registration Notes:** No Photo Available

The Protocol Results screen will appear.



To view all protocols for this patient click "All", the view only the tests this patient is due for click "Due Only"

When finished with the patient Protocols click close